

WEIGHT DISTRIBUTION CAP

Product Advantages

Rated up to 750lb. (340kg.)

Clear or opaque tube side

Slip-resistant feet

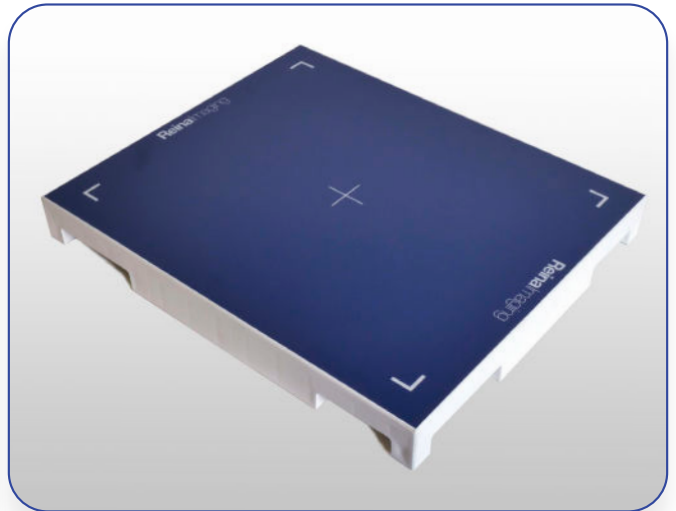
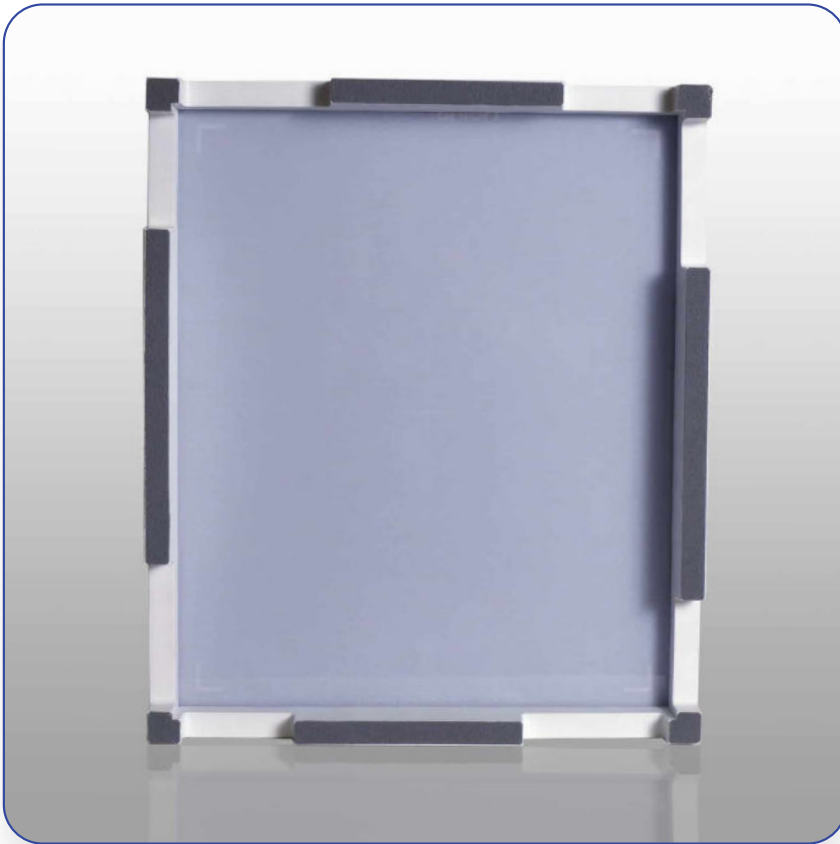
Easy to clean pathogen resistant material

Cutouts for tether

Weight bearing standing feet exams are a necessary radiographic position when looking to see the joint spaces under the patient's normal weight. The **Weight Distribution Cap** allows you to achieve this exam safely while using an expensive DR panel. Rated up to 750lb. (340kg) of direct patient weight, this protective, yet simple accessory, is a must have for any imaging department that performs this radiographic exam.

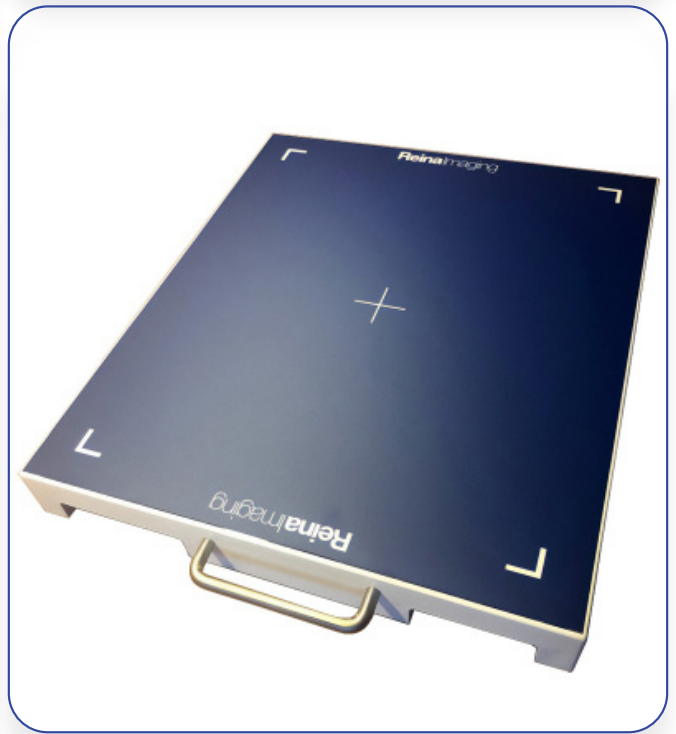
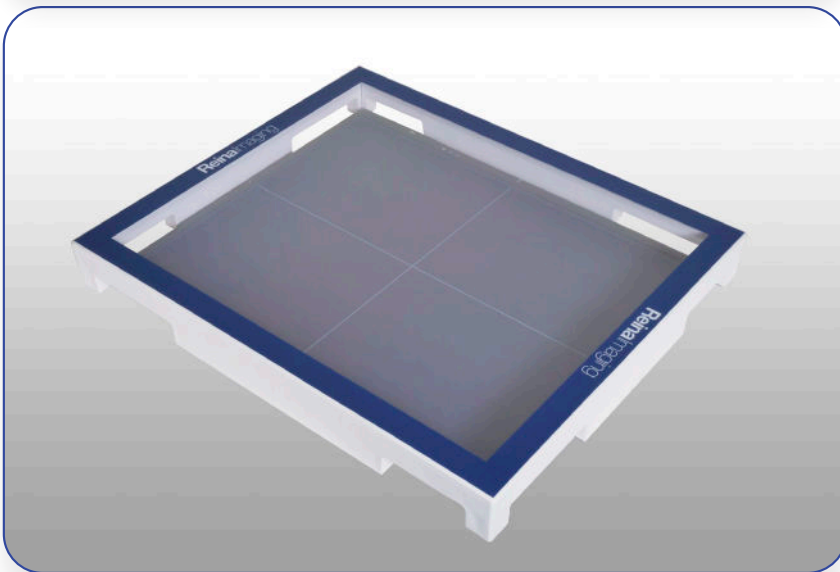


Product Details



Available in sizes: 14x17in, 17x17in, 10x12in and more.

Other Variations



Clear tube side

Optional carrying handle



Reina Imaging CE

Safer • Protective • Preferred Radiology Accessories



www.reinaimaging.com

 customer_service@reinaimaging.com