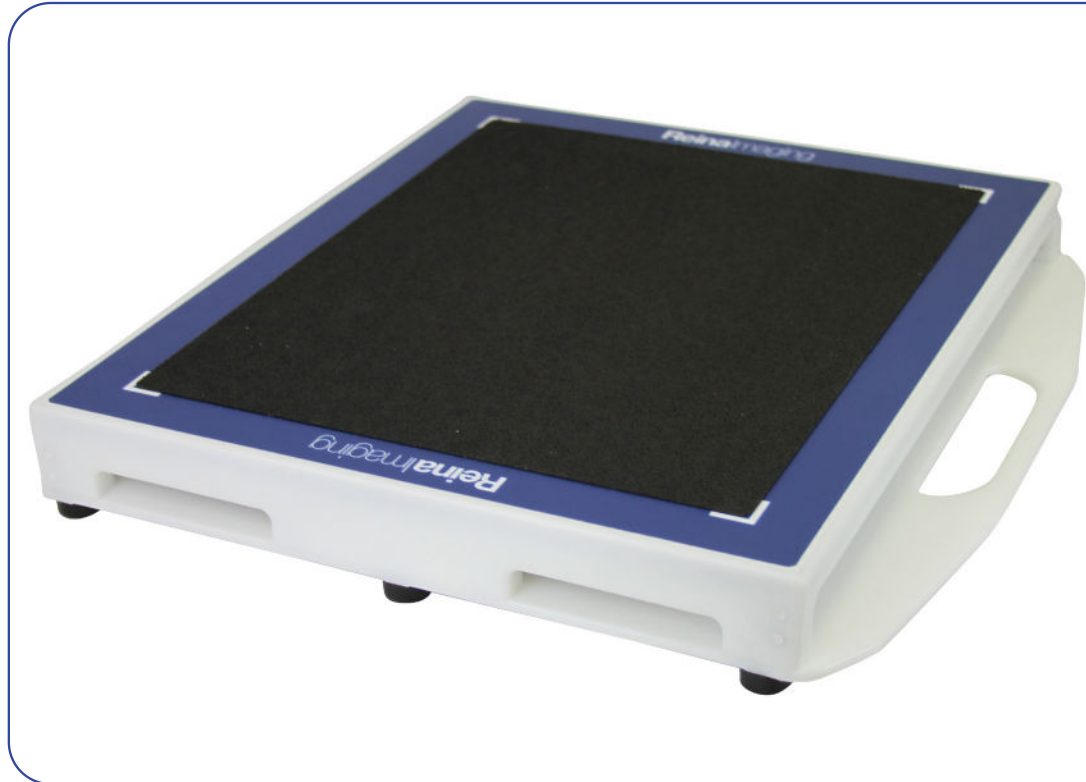


Equine Tunnel

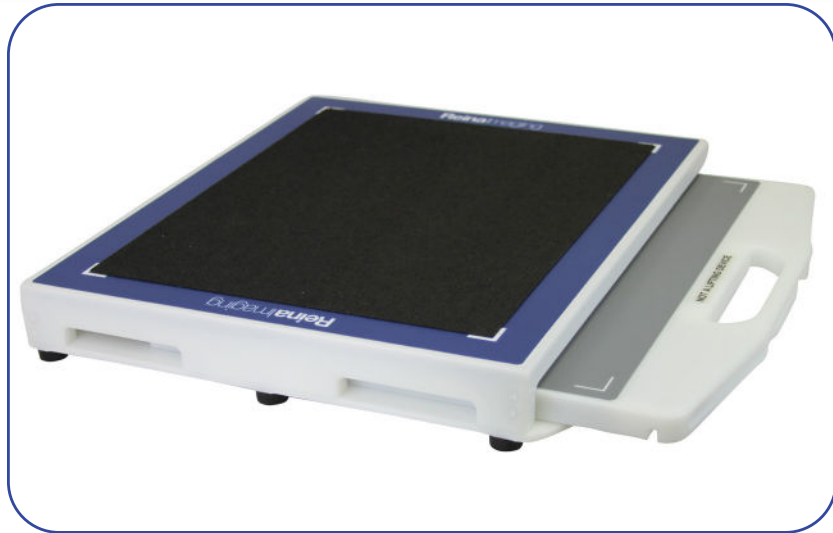
Product Family Advantages

- Rugged, lightweight construction, rated up to 1K (453kg) of direct weight
- Slip-resistant tube side protective cover
- Tunnel with solid bottom and four rubber feet protects the panel on all four sides during weight bearing exams
- Available in 17x17in., 14x17in., 10x12in. and 24x30cm
- Built-in carrying handle for transport and positioning
- Can be used with or without a protective carrying case

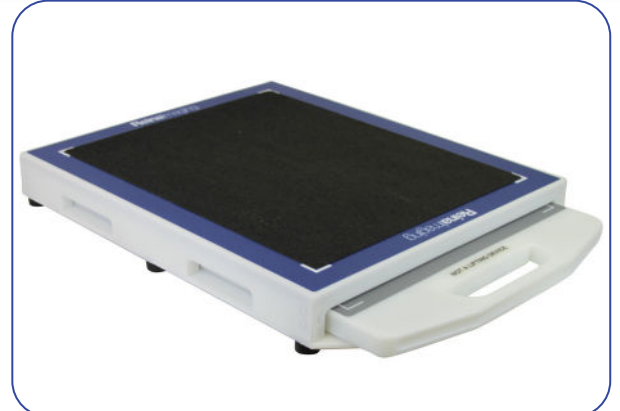


The **Equine Tunnel** line of accessories offers superior panel protection and ease of use without breaking the bank. Available in a variety of sizes and configurations, the **Equine Tunnel** protects the DR panel from damage when radiographing the hoof. Elevated with rubber feet, the bottom of the DR panel is raised off the floor, fully protected for use in the toughest environments.

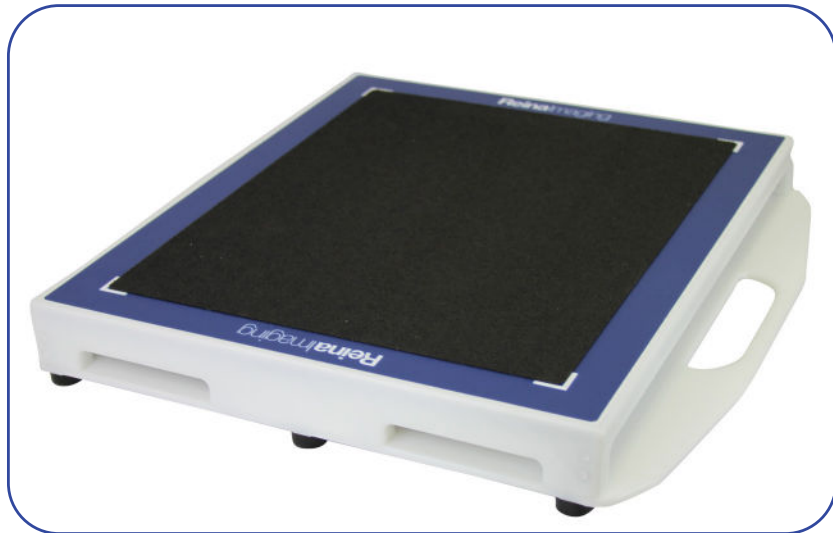
Product Details



Opening on long axis with carrying case



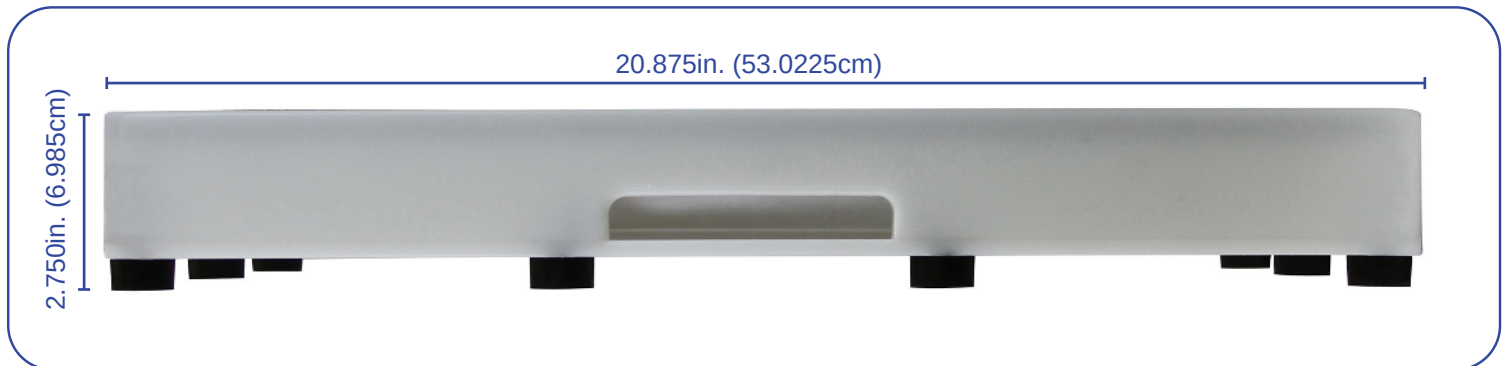
Opening on short axis with carrying case



Opening on long axis without carrying case



Protective slip-resistant tube side cover



Finger slot for easy panel and holder removal

*Mobile DR Panel Holder not included



ReinaImaging CE



Safer • Protective • Preferred Radiology Accessories

www.reinaimaging.com



customer_service@reinaimaging.com