

# CarbonLite

## Product Advantages

- 0.5mm full carbon fiber tube side
- Single handle on long or short axis to help carry and position the image receptor
- Virtually indestructible, shock absorbent, glass-filled polypropylene frame
- Curved corners and radiused edges that won't catch on bed sheets or clothes for easy placement
- Smooth, non-porous surfaces for effective cleaning and superior infection control
- Simple Twin-Lock™ dual locking design for easy panel application and removal
- Ergonomic handle to reduce fatigue and provide a sure grip
- Shock absorbent corner bumpers and inserts for additional drop protection and perfect fit
- Fits most ANSI sized wireless DR panels and most tethered DR panels



The **CarbonLite™**, an ideal blend of carbon fiber and polycarbonate tube side protection, features a full 0.5mm sheet of carbon fiber with a polycarbonate backing, providing superior tube side protection at an affordable price. Available with and without a grid in a variety of sizes, the **CarbonLite** offers an affordable choice with *remarkable protection*.

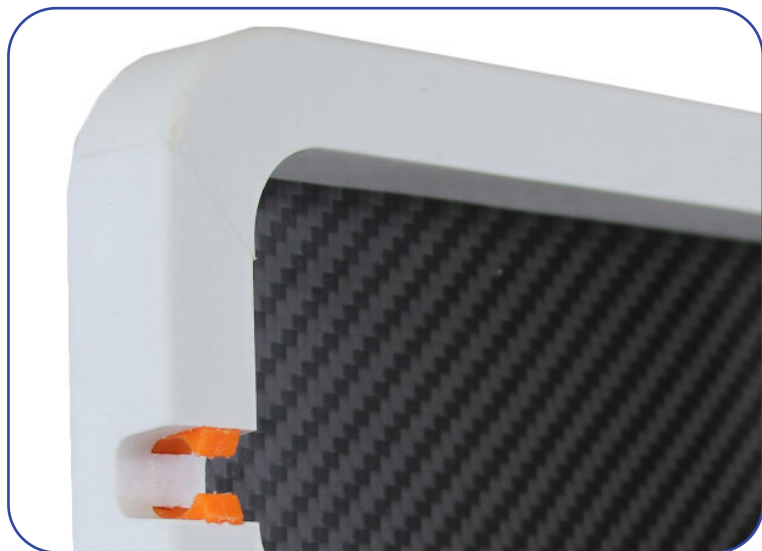
# Product Details



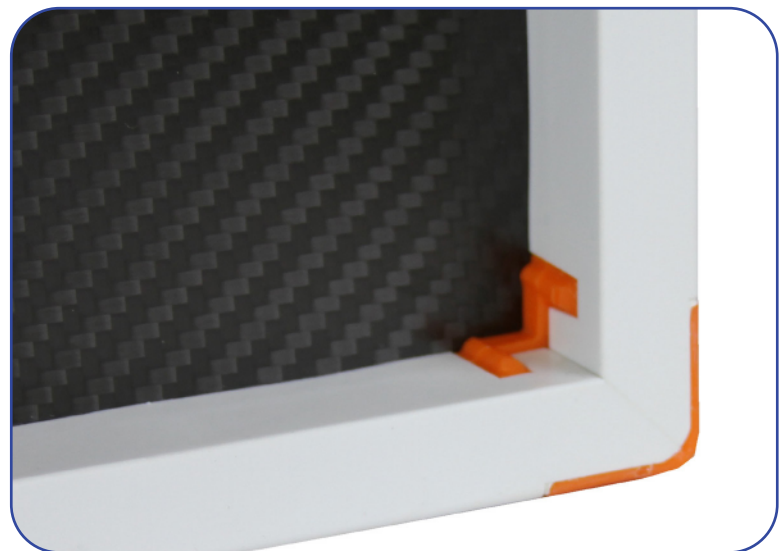
Tube Side



Rear Side with Twin-Lock™



Curved Corners and Cable Management



Shock Absorbent Corner Bumpers



**Reinaimaging** CE

Safer • Protective • Preferred Radiology Accessories



[www.reinaimaging.com](http://www.reinaimaging.com)

 [customer\\_service@reinaimaging.com](mailto:customer_service@reinaimaging.com)

# Product Specifications

Product Code	Product Name	Dimensions (cm)	Weight (kg)
<b>17 x 17 Handle on Long Axis</b>			
CC517	17x17 CarbonLite Grid Encasement	56.42 x 49.22 x 2.69	1.76*
CC5NG17	17x17 CarbonLite Mobile DR Panel Holder	56.42 x 49.22 x 2.69	1.76
<b>14 x 17 Handle on Long Axis</b>			
CC514	14x17 CarbonLite Grid Encasement	48.91 x 49.22 x 2.69	1.58*
CC5NG14	14x17 CarbonLite Mobile DR Panel Holder	48.91 x 49.22 x 2.69	1.58
<b>10 x 12 Handle on Long Axis</b>			
CC510	10x12 CarbonLite Grid Encasement	38.47 x 36.54 x 2.69	1*
CC5NG10	10x12 CarbonLite Mobile DR Panel Holder	38.47 x 36.54 x 2.69	1
<b>24 x 30 Handle on Long axis</b>			
CC524	24x30 CarbonLite Grid Encasement	38.47 x 36.54 x 2.69	1*
CC5NG24	24x30 CarbonLite Mobile DR Panel Holder	38.47 x 36.54 x 2.69	1

\*Plus Selected Grid



**ReinaImaging**



[www.reinaimaging.com](http://www.reinaimaging.com)



[customer\\_service@reinaimaging.com](mailto:customer_service@reinaimaging.com)

Safer • Protective • Preferred Radiology Accessories