

CarbonCase

Product Advantages

- Single handle on long or short axis to help carry and position the image receptor
- Virtually indestructible, shock absorbent, glass-filled polypropylene frame
- Curved corners and radiused edges don't catch on bed sheets or clothes for easy placement
- Smooth, non-porous surfaces for effective cleaning and superior infection control
- Simple Twin-Lock™ dual locking design for easy panel application and removal
- Ergonomic handle to reduce fatigue and provide a sure grip
- Shock absorbent corner bumpers and inserts for additional drop protection and perfect fit
- Three configurations of tube side protection to meet your needs and budget
- Fits all ANSI sized wireless DR panels and most tethered DR panels



The **CarbonCase™** family of accessories share similar attributes and features three unique tube side support specifications for grid encasements and mobile DR panel holders. Available in a variety of sizes and configurations including 24x30cm, 10x12in, 14x17in and 17x17in with handles on the long or short axis. The **CarbonMax** features an industry-leading 2.5mm carbon fiber tube side support that boasts a strength-to-weight ratio that make it the pound-for-pound world champion in detector protection. The **CarbonLite** showcases a performance-blended top plate including .5mm carbon fiber with a polycarbonate backing, yielding an affordable choice with remarkable protection. The **PolyCarbon** provides a rugged, extremely durable polycarbonate top plate while offering the most affordable price in the market today. Like all Reina Imaging detector holders, the **CarbonCase** product line provides superior protection for both your DR panel and the grid resulting in the **lowest lifetime cost of ownership** available today.



Simple Twin-Lock™



ReinaImaging CE

Safer • Protective • Preferred Radiology Accessories



www.reinaimaging.com



customer_service@reinaimaging.com

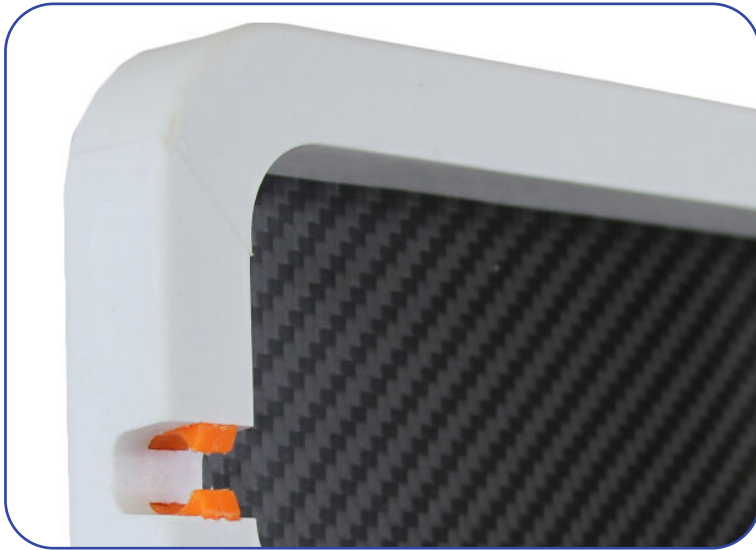
Product Details



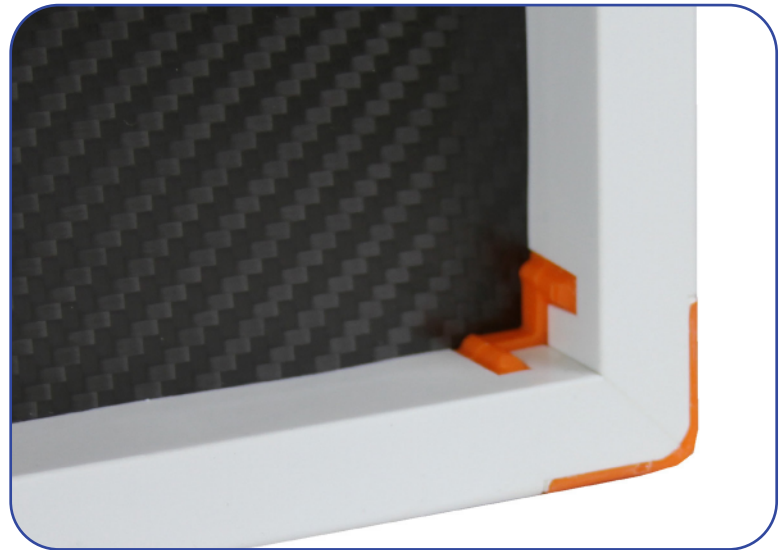
Tube Side



Rear Side



Curved Corners and Radiused Edges



Shock Absorbent Corner Bumpers



Reina Imaging CE

Safer • Protective • Preferred Radiology Accessories



www.reinaimaging.com

 customer_service@reinaimaging.com

Product Code	Product Name	Dimensions (cm)	Weight (kg)
17 x 17 Handle on Long Axis			
CC217	17x17 CarbonMax Grid Encasement	56.42 x 49.22 x 2.69	1.76*
CC517	17x17 CarbonLite Grid Encasement	56.42 x 49.22 x 2.69	1.76*
CC17	17x17 PolyCarbon Grid Encasement	56.42 x 49.22 x 2.69	1.85*
CC2NG17	17x17 CarbonMax Mobile DR Panel Holder	56.42 x 49.22 x 2.69	1.76
CC5NG17	17x17 CarbonLite Mobile DR Panel Holder	56.42 x 49.22 x 2.69	1.76
CCNG17	17x17 PolyCarbon Mobile DR Panel Holder	56.42 x 49.22 x 2.69	1.85
14 x 17 Handle on Long Axis			
CC214	14x17 CarbonMax Grid Encasement	48.91 x 49.22 x 2.69	1.54*
CC514	14x17 CarbonLite Grid Encasement	48.91 x 49.22 x 2.69	1.58*
CC14	14x17 PolyCarbon Grid Encasement	48.91 x 49.22 x 2.69	1.67*
CC2NG14	14x17 CarbonMax Mobile DR Panel Holder	48.91 x 49.22 x 2.69	1.54
CC5NG14	14x17 CarbonLite Mobile DR Panel Holder	48.91 x 49.22 x 2.69	1.58
CCNG14	14x17 PolyCarbon Mobile DR Panel Holder	48.91 x 49.22 x 2.69	1.67
10 x 12 Handle on Long Axis			
CC210	10x12 CarbonMax Grid Encasement	38.47 x 36.54 x 2.69	1*
CC510	10x12 CarbonLite Grid Encasement	38.47 x 36.54 x 2.69	1*
CC10	10x12 PolyCarbon Grid Encasement	38.47 x 36.54 x 2.69	1.08*
CC2NG10	10x12 CarbonMax Mobile DR Panel Holder	38.47 x 36.54 x 2.69	1
CC5NG10	10x12 CarbonLite Mobile DR Panel Holder	38.47 x 36.54 x 2.69	1
CCNG10	10x12 PolyCarbon Mobile DR Panel Holder	38.47 x 36.54 x 2.69	1.08
24 x 30 Handle on Long axis			
CC224	24x30 CarbonMax Grid Encasement	38.47 x 36.54 x 2.69	1*
CC524	24x30 CarbonLite Grid Encasement	38.47 x 36.54 x 2.69	1*
CC24	24x30 PolyCarbon Grid Encasement	38.47 x 36.54 x 2.69	1.08*
CC2NG24	24x30 CarbonMax Mobile DR Panel Holder	38.47 x 36.54 x 2.69	1
CC5NG24	24x30 CarbonLite Mobile DR Panel Holder	38.47 x 36.54 x 2.69	1
CCNG24	24x30 PolyCarbon Mobile DR Panel Holder	38.47 x 36.54 x 2.69	1.08

*Plus Selected Grid