

PRODUCT DATASHEET



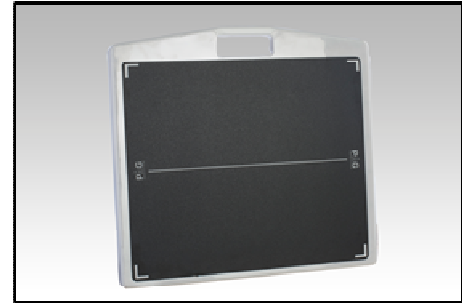
Model: **PDRD224**

Description: **PROTECT-A-GRID DR FOR FUJI D-EVO 2 24x30cm**

Revision: June 2015

PRODUCT ATTRIBUTES:

- Encases grid to protect against damage.
- Holds DR Panel during exams.
- Provides additional protection for DR Panel.



MATERIAL COMPOSITION

PART	MATERIAL	APPROXIMATE %
Shell	HDP	98
Overlay	Polycarbonate Film	2

DIMENSIONS AND PERFORMANCE

Product Dimension: 13.6 x 13.5 x 1 in. (34.5 x 34.3 x 2.54 cm)

Weight: 1.3 lbs. (0.6 kg)

Weight Tolerance: 400 lbs. (181.4 kg)

Not designed for weight bearing exams. Not to be used without an image receptor.

FLAMMABILITY RATING

The product is non-flammable under the normal operating conditions of the DR Panel.

UL Rating: UL94V-2.

BIOCOMPATIBILITY

This model is a biocompatible device per ISO 10993.

STATEMENT OF CONFORMANCE

Reina Imaging hereby states that the data, specifications, and descriptions contained herein this document are accurate and representative of the models being described.

REGISTRATIONS AND COMPLIANCE

All models listed above are made in the USA and registered to:

Reina Imaging
6107 Lou Ave.
Crystal Lake, IL 60014 USA

AUTHORIZED EU REPRESENTATIVE

PINCHET RX. S.r.l.
20148Milano Via don Gnocchi 24, Italy
+39 02 48706799

DEVICE FAMILY CLASSIFICATION

Country	Class
USA	FDA Class 1, 510(k) exempt
Canada	Class 1
Europe	Class 1, Annex VII, CE
TGA	Class 1