

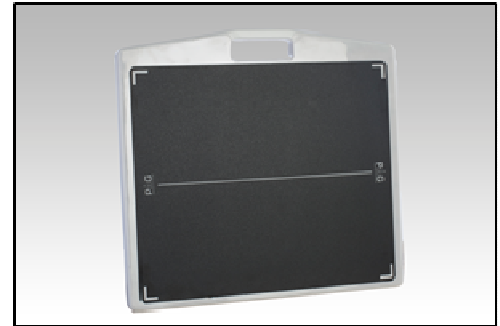
## PRODUCT DATASHEET

Model: PDRD2

Description: PROTECT-A-GRID DR FOR FUJI D-EVO 2

Revision: June 2015

ReinaImaging



### PRODUCT ATTRIBUTES:

- Encases grid to protect against damage.
- Holds DR Panel during exams.
- Provides additional protection for DR Panel.

### MATERIAL COMPOSITION

PART	MATERIAL	APPROXIMATE %
Shell	HDP	98
Overlay	Polycarbonate Film	2

### DIMENSIONS AND PERFORMANCE

Product Dimension: 18.5 x 18.8 x 1 in. (47 x 47.8 x 2.54 cm)

Weight: 1.7 lbs. (0.77 kg)

Weight Tolerance: 400 lbs. (181.4 kg)

*Not designed for weight bearing exams. Not to be used without an image receptor.*

### FLAMMABILITY RATING

The product is non-flammable under the normal operating conditions of the DR Panel.

UL Rating: UL94V-2.

### BIOCOMPATIBILITY

This model is a biocompatible device per ISO 10993.

### STATEMENT OF CONFORMANCE

Reina Imaging hereby states that the data, specifications, and descriptions contained herein this document are accurate and representative of the models being described.

### REGISTRATIONS AND COMPLIANCE

All models listed above are made in the USA and registered to:

**Reina Imaging**  
6107 Lou Ave.  
Crystal Lake, IL 60014 USA

### AUTHORIZED EU REPRESENTATIVE

PINCHET RX. S.r.l.  
20148Milano Via don Gnocchi 24, Italy  
+39 02 48706799

### DEVICE FAMILY CLASSIFICATION

Country	Class
USA	FDA Class 1, 510(k) exempt
Canada	Class 1
Europe	Class 1, Annex VII, CE
TGA	Class 1

6107 West Lou Avenue | Crystal Lake, IL 60014 | (P) 800.752.4918 | (F) 815.356.8270 | [reinaimaging.com](http://reinaimaging.com)